

*The* **Dubai**  
Directory

*[TOUCHDOWN,*

*DUBAI]*

You've arrived.

Dubai doesn't wait, it moves. It shifts, whispers, and reveals itself in layers, a city of endless intersections where culture, ambition, and imagination meet. Here, the desert leans into the sea, mountains frame the skyline, and every neighbourhood hums its own rhythm. Tradition and modernity don't collide here—they converse. Souqs scented with spice sit quietly beside tall glass towers that catch the sun like mirrors. Every corner is a doorway, every neighborhood a story waiting to be told.

For creators, for wanderers, for anyone with curiosity in their pockets, Dubai is a living canvas; a rare phenomenon of many worlds held within one city. Open desert roads invite long drives, quiet beaches beg for reflection, marinas pulse with energy, cultural enclaves cradle centuries of stories and state-of-the-art facilities whisper opportunity. In Dubai, your story doesn't just unfold, it takes shape, finds home, and comes to life. And yet, Dubai is in the details; the moments you can't plan for. The echo of the adhan across an early morning skyline, the smell of fresh bread wafting from a street bakery, the quiet glint of sunlight on the waves as you wander along a marina. It's in the alleyways where artisans work, the rooftops where the city lights flicker like constellations, and the empty stretches of desert where time slows just enough to breathe.

This directory is more than a guide, it's a companion. Each page a street to walk, a scene to pause in, a framed shot waiting to be captured. Flip through, and let Dubai reveal itself one layer at a time. It's time you get to know one another.

*(Explore Dubai's beaches, marinas, and waterfronts, where the city meets the sea)*

# PLACES AND SPACES



*(By the  
Water*

*By the  
Coast*

*By the Sea)*

Kite  
Beach

Burj Al Arab  
Beach

Mamzar Beach

Sunrise  
Beach

Marina JBR  
Beach

Dubai Creek

Dubai Canal

Palm  
Jumeirah

Jebel Ali

Mina Rashid



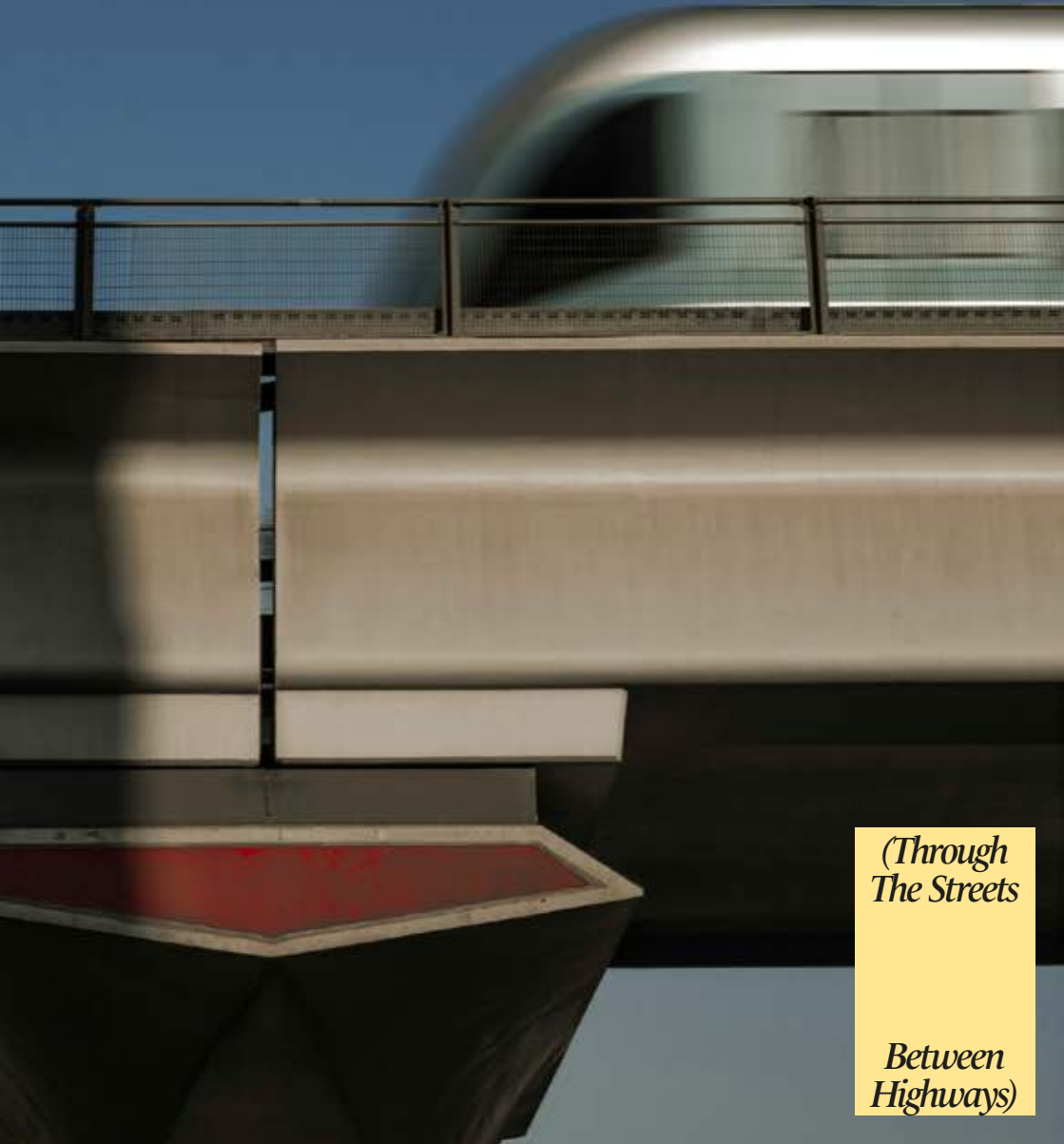


Jumeirah Beach Residence  
(JBR)



Jumeirah Beach





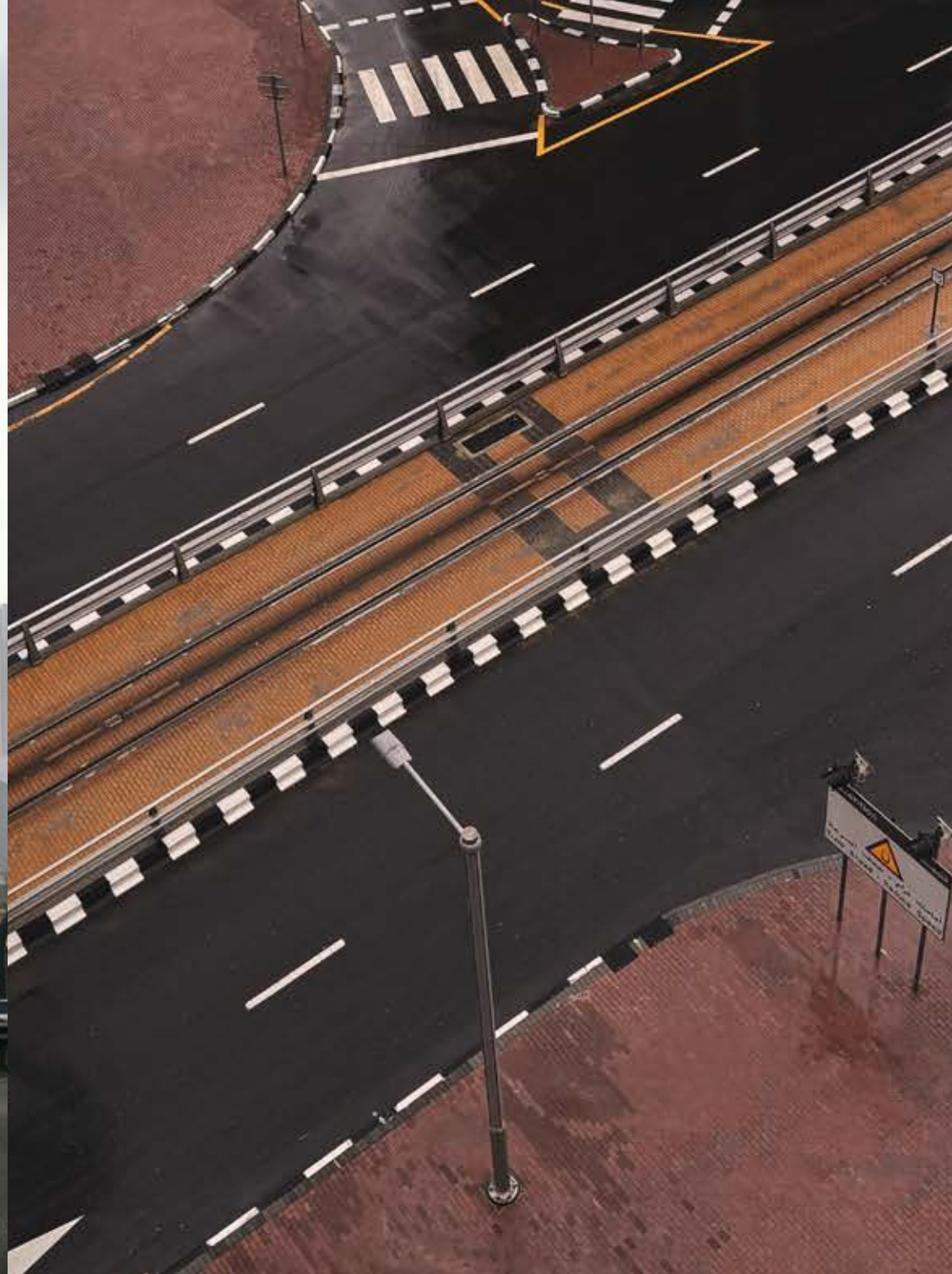
*(Through  
The Streets)*

*(Between  
Highways)*

- Sheikh Zayed Road
- Meydan Bridge
- Al Mustaqbal Street Bridge
- Desert Road
- Neighbourhood Streets
- Downtown
- Expo Streets
- DIFC
- Jumeirah Beach Road
- Kite Surf / Road by Beach
- Al Wasl Road
- City Walk



Sheikh Zayed Road



Dubai Marina



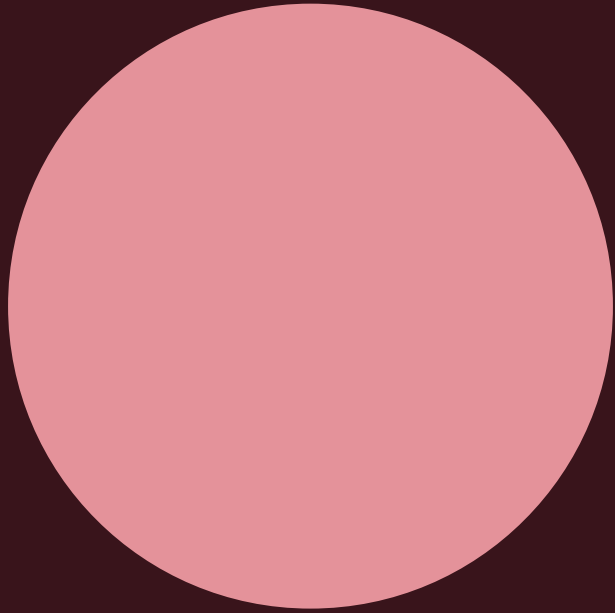
Sheikh Zayed Road

Meydan Bridge



Infinity Bridge





*(Into The  
Desert*

*Closer to  
Nature)*

*(Discover desert landscapes, nature escapes, and  
outdoor adventures)*

Um AlNosoor Peak  
Hatta Mountains  
Hatta Dam  
Hatta Green Lake  
Al Marmoom  
Al Qudra Desert Lake  
Love Lake Al Qudra  
Lahbab  
Al Ruwayyah  
Nad Al Sheba Forest Trail  
Green Planet  
Dubai Safari Park  
Safa Park





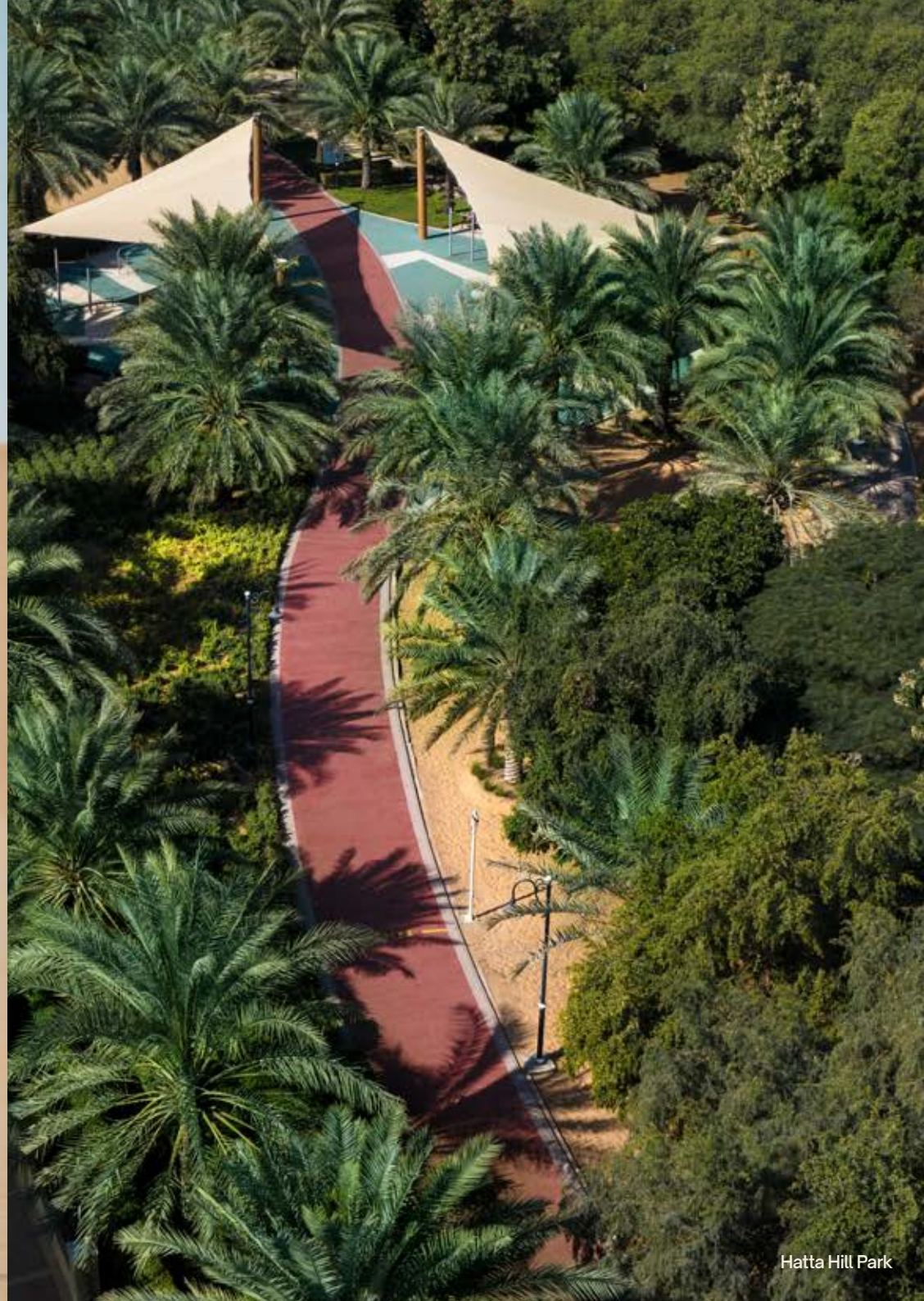


Al Marmoom





Hatta Mountains



Hatta Hill Park

*(The  
Old  
Dubai)*

*(Visit historic neighborhoods, heritage on site,  
traditional markets, and cultural landmarks)*

Hatta Heritage Village

Al Fahidi Historical Neighbourhood

Al Seef

Al Shindagha

Freej Al Marar

Gold Souq



Al Shindangha Museum







Al Seef





(Places of stay—from luxury hotels to boutique retreats, with spaces to rest and recharge)

*H  
O  
T  
E  
L  
S*

*&  
RE  
SO  
RT  
S*

/ Luxury /

Atlantis The Royal

Atlantis

Four Seasons

Bulgari Hotel

One&Only One Za'abeel

Anantara Hotels

/ Traditional /

Al Maha Hotel

Bab al Shams Desert Resort

XVA Hotel

Al Seef Heritage Hotel









Marsa Al Arab and Jumeirah Beach Hotel



Jumeirah Dar Al Masyaf Arabian House



## *Along the Neighbourhoods*

*(Stroll through local charming neighbourhoods, and  
experience everyday life in the city)*

Burj Khalifa    One&Only One Za'abeel    ICD    Downtown    Dubai Mall    DIFC    Marina    JBR    Expo City    Dubai Design District  
Dubai Parks Riverland    Dubai Frame    Global Village    MBR Library    Al Jaddaf    Al Barari    Al Rashidiya    Al Khawaneej    The Greens    Art Jameel    Ski Dubai    Museum of the Future    Creek Harbor

Al Serkal Avenue



Dubai Frame



AlSerkal Avenue





Burj Khalifa

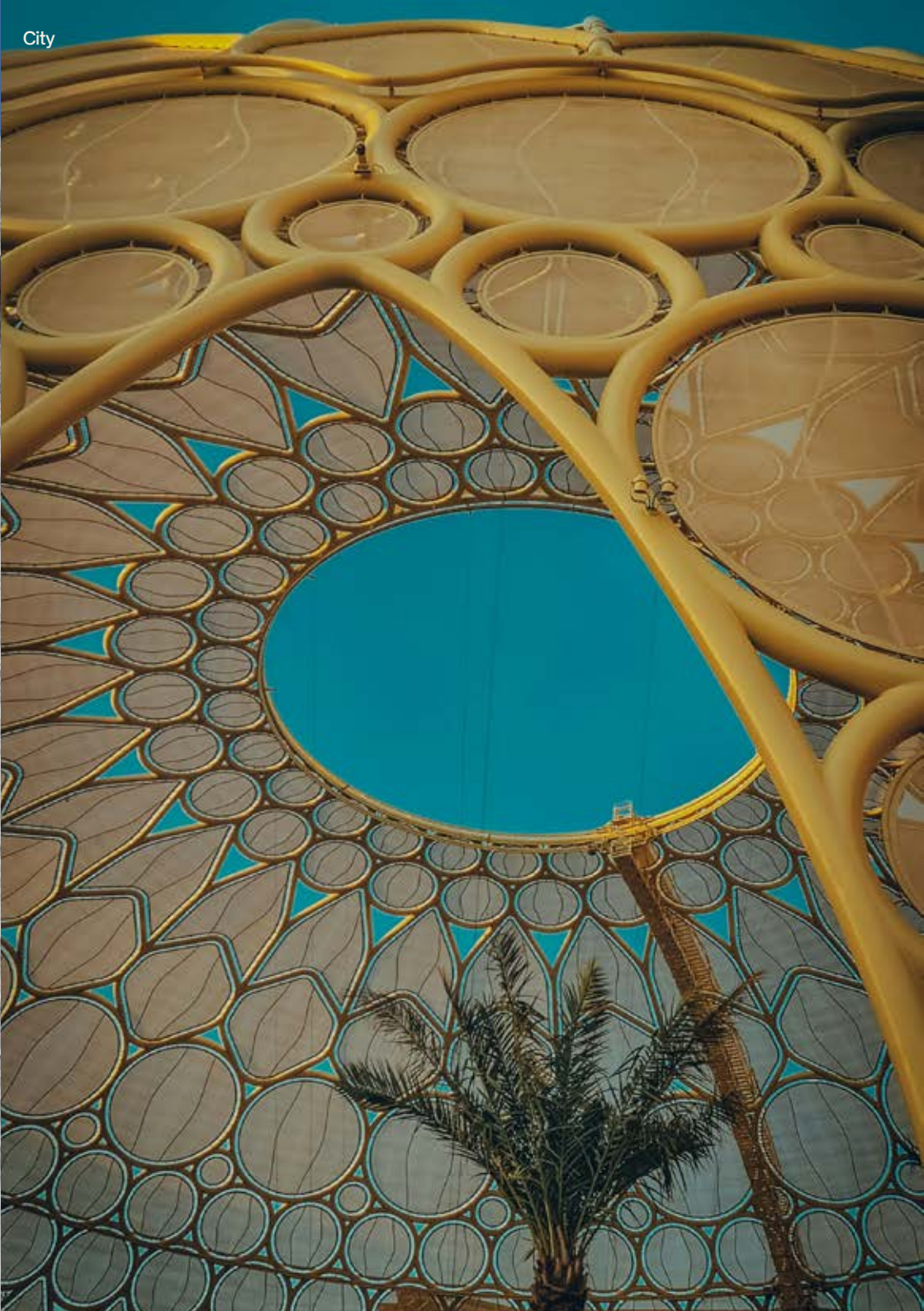


Dubai Design District



Dubai Marina





*The*

Burj Khalifa  
Business Bay  
Marsa Al Arab  
Museum of the Future  
One&Only One Za'abeel  
Meydan Bridge

*(See the city's modern  
architecture, innovative  
infrastructure and visionary  
facades)*

*Future*



Jumeirah Emirates Towers





One&Only One Za'abeel



# Creative Spaces

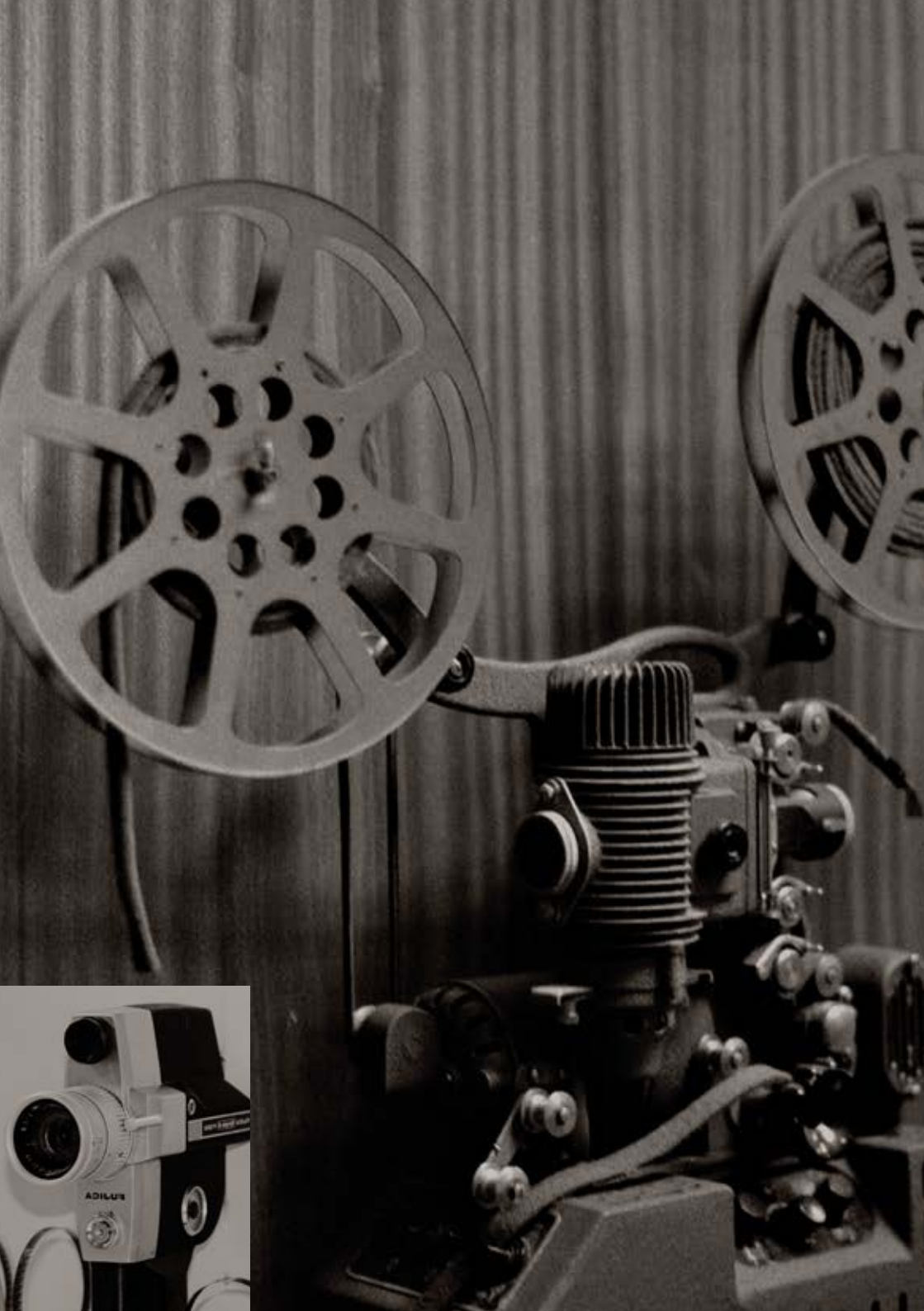
Al Quoz

Dubai Media City

Dubai Studio City (3 Sound Stages)

Dubai Studio City (6 Studios)

*(Explore galleries, studios, and  
state-of-the-art venues  
where ideas come to life)*



Dubai Studio City serves as a one-stop-shop for filmmakers, producers and crews to make filming in Dubai as easy and cost effective as possible.



# The Stages

(State-of-the-Art Soundstages)

Step into a production environment designed for scale, precision, and possibility.

Located within Dubai Studio City, these soundstages connect you to a complete media ecosystem—where every element of production lives within reach.

From concept to final cut, everything happens here.

# Engineered for Production

- \* Total sound isolation with silent climate control
- \* High-capacity lighting grids with full catwalk access
- \* Elephant doors for seamless movement of sets and equipment
- \* Dedicated production offices and support areas
- \* On-site workshops for set construction
- \* Direct access to expansive backlot
- \* Indoor water tanks for underwater filming
- \* Robust power and cooling infrastructure



## At a Glance

- 6,000+ sqm of flexible stage space
- Up to 15m clear height
- NC25-rated soundproofing

## Built for Big Ideas

Three interconnected stages designed to adapt—combining into a 50,000 sq.ft. mega-stage when scale demands it.

## *(The Ecosystem)*

### *Where Everything Comes Together*

Dubai Studio City is more than a location—it's a fully integrated production hub.

Home to over 300 companies across film, television, and entertainment, it brings together the people, tools, and infrastructure behind world-class content.

Just 15 minutes from Dubai International Airport, it's built for efficiency as much as ambition.

## *Workshops*

Purpose-built spaces for set construction and preparation—positioned within immediate reach of the stages to keep production moving without friction.

### *End—to—End Production Support*

A complete creative network at your fingertips:

- \* Production and post-production houses
- \* Casting, styling, makeup, and set design
- \* Skilled crews and technical specialists

## *Water Tanks*

Stages 2 and 3 feature indoor water tanks built to international standards—ready for everything from controlled underwater scenes to complex action sequences.

## *(Production Offices & Facilities)*

### *Supporting Spaces*

- \* Ensuite dressing rooms
- \* Green rooms
- \* Hair & makeup suites
- \* Casting and holding areas

## *Backlot*

A 3 million sq.ft. backlot offering the freedom to build, scale, and shoot without limits—whether for large-format productions or more contained setups.

## *Workspaces*

- \* Open-plan and private offices
- \* Meeting rooms
- \* Fully equipped IT and telecom infrastructure

*Filmed in the City*



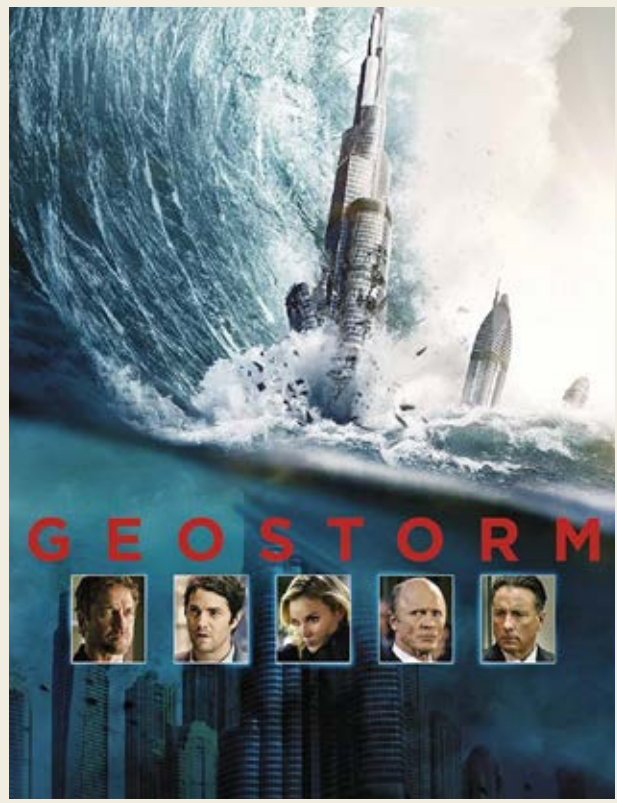
Mission Impossible: Ghost Protocol (2011)  
Burj Khalifa



Syriana (2005)  
Old Dubai



Mission Impossible: Ghost Protocol (2011)  
Burj Khalifa



Geostorm (2017)  
Downtown

Genie, Make a Wish (2025)  
Desert Camp





